



panvellestretchTM
waterproof upholstery patent granted
GB 2424654 B

NHS Contract Number
FAG49 1000

Waterproof | Anti - Microbial | Anti - Fungal | Stain Resistance
Breathable | Flame Retardant | Multi - Directional Stretch



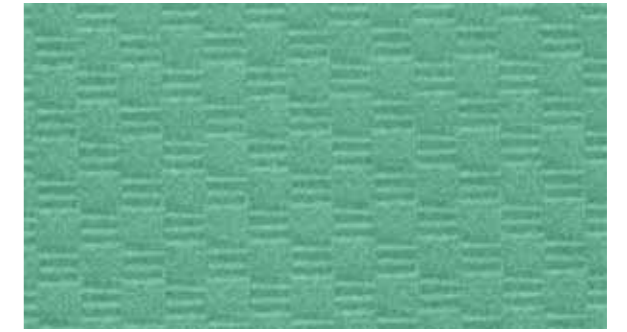
Eva 702 Chocolate



Oslo 408 Terracotta



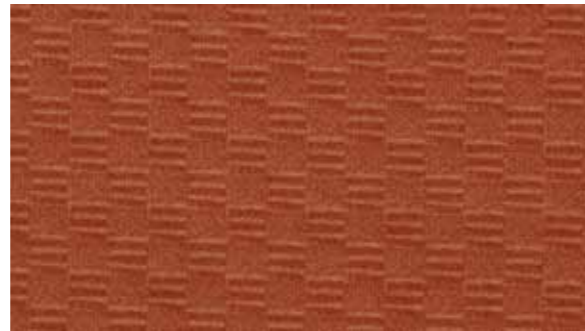
Oslo 807 Mushroom



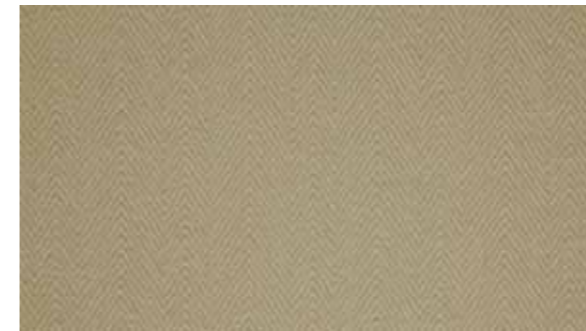
Tenby 201 Jade



Oslo 814 Espresso



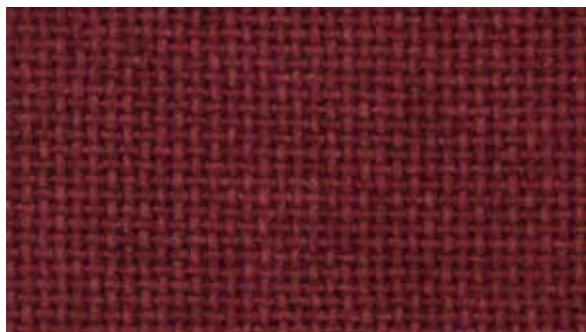
Tenby 408 Terracotta



Oslo 823 Chablis



Oslo 155 Duck Egg Blue



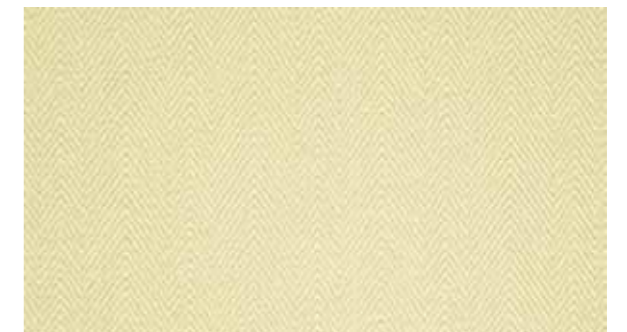
Eva 414 Wine



Tenby 400 Red



Eva 800 Beige



Oslo 837 Stone



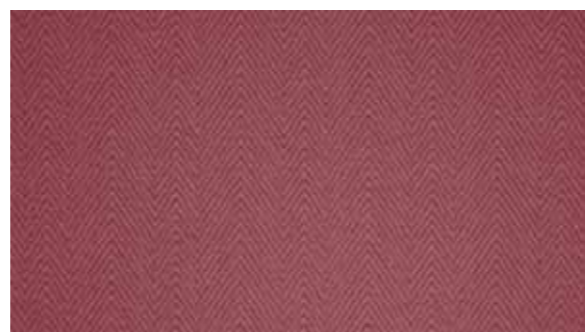
Colourwash 608 Fuchsia



Oslo 429 Chilli



Oslo 326 Hay



Oslo 609 Rose



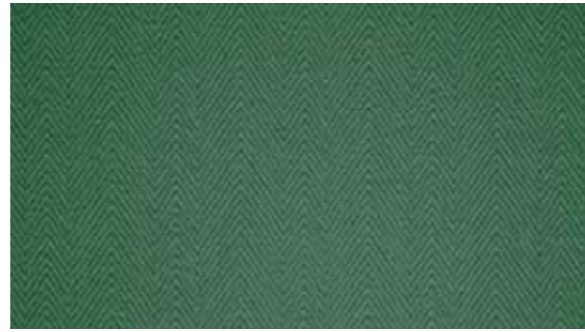
Tenby 800 Beige



Tenby 302 Sweetcorn



Colourwash 207 Evergreen



Oslo 211 Spruce



Oslo 903 Charcoal



Oslo 105 Indigo



Oslo 226 Lime



Tenby 211 Spruce



Colourwash 624 Mulberry



Colourwash 116 Navy



Tenby 139 Aqua



Tenby 624 Mulberry



Tenby 105 Indigo



Oslo 114 Lavender



Colourwash 136 Blueberry



Oslo 624 Mulberry



Tenby 100 Blue



Tenby 127 Lilac



Oslo 197 Pigeon Grey



Tenby 117 Royal

CARE & MAINTENANCE OF YOUR PANVELLE STRETCH UPHOLSTERY

Clean and care for your upholstery on a regular basis and it will maintain its condition and appearance.

1. Vacuum and wipe clean regularly with a microfibre cloth and water to remove dust particles and prevent build up of soiling.
2. Remove spillages promptly with an absorbent dry cloth.
3. If heavier soiling has been allowed to accumulate, try using water only first, then use a mild liquid soap, ensuring that cleaning products are removed, as they inhibit the stain repellent. Take care not to cause abrasive damage.
4. Wipe off bodily fluids promptly (within 15 minutes) with cold water and then clean as above.
5. For extreme soiling/infection control purposes, use a 5% sodium hypochlorite (bleach) solution, Haz Tabs or Chlor-Clean.

NB: Steam cleaning is an effective sanitizer (as are Haz Tabs and Chlor-Clean) but is not a good cleaner. Cleaning with a microfibre cloth and water is more effective. Steam and heat from steam cleaners actually seal in oily residues from bodily fluids, etc.

7. Do not machine wash (except Panvelle Wash), fully immerse, dry clean or apply other chemicals.
8. Microfibre cleaning cloths are extremely effective even without soap, which is helpful as soap residues can clog the fibre making it difficult to clean. Tests conducted by Satra Laboratories showed that a microfibre cloth and water alone were just as effective in removing marks and stains as using proprietary cleaner.

panvellestretchTM
waterproof upholstery patent granted
GB 2424654 B

One of many innovative products in the Panaz **Intelligent** textiles range
performance fabrics

panvellestretchTM Technical Information
waterproof upholstery patent granted
GB 2424654 B

Country of Manufacture:	EEC
Composition:	100% Filament Polyester, multi-coated with Microporous Polymers and Flame Retardant
Weight:	400 gsm +/- 5%
Width :	137cm (54")
Waterproof:	Hydrostatic head BS 3424 > 1 metre
Breathable:	Moisture Vapour Permeable BS 3546 65%
Flame Retardant:	BS7176 Medium Hazard BS5852 Ignition Source 0,1 + 5 CAL TB 116 and 117, NFPA 260 (USA) EN1021/2 DIN 66082 (Textile Standard) – B1 (Germany) IMO Res. A652 (16)
Martindale Abrasion:	End point 60,000+ No pilling
Light Fastness:	Grade 6
Colour Fastness to Rubbing:	BS EN ISO 105 – X12: 2002 Dry >3-4, Wet >3
Tear Strength:	BS 4303 (Severe Contract)
Burst Strength:	BS 4768 (Severe Contract)
Breaking Strength:	BS 2576 (Severe Contract)
Anti-Microbial/ Anti-Fungal:	Will not support microbial growth including: • Aspergillus Niger • E.Coli • Altinata • Salmonella • Penicillium • Staphylococcus Aureus (MRSA) • Cladosporium Herbarism AATCC test method 147 - 1998 AATCC test method 30 - 1998
Recommended Cleaning:	Please see full care and maintenance instructions inside.
Additional Features:	Two-way stretch for pressure relief situations. Waterproof, Breathable, Anti-MRSA, Anti-microbial, Anti-fungal and stain resistant. Excellent stain removal has been observed for: • Blood • Urine • Grease • Ink • Grape Juice • Iodine • Betadine • Ketchup • Mustard • Salad Dressing • Suntan Lotion
Continuity:	Although every effort is made to ensure that fabrics ordered match the colours in this pattern card, slight variations may occur from batch to batch. Please note Panaz reserve the right to update product specification at their discretion.



Certificate No: 2358

Panaz[®]
Healthcare

For further information please visit:
www.panaz.com

Head Office
Panaz Ltd, Spring Mill, Fence, Nr Burnley, Lancashire. BB12 9HP England
Tel: +44 (0) 1282 696969 Fax: +44 (0) 1282 611519 Email: admin@panaz.co.uk

Panaz Germany
Nortzstrasse 20
67152 Ruppertsberg
Germany
Tel: +49 6326 967 528
Fax: +49 6326 980 553
Email: Uwe.Ney@t-online.de

Panaz France
2 Passage Flourens
75017 Paris
France
Tel: +33 (0)6 07 62 21 19
Fax: +33 (0)1 40 25 09 64
Email: patrick.martinez@noos.fr

Panaz Holland
Rosebank Projekttextiel
Hooigracht 42
2514 BG The Hague
Holland
Tel: +31 70 392 4565
Fax: +31 70 356 9585
Email: rosebank@planet.nl

Panaz USA
2102 Business Centre Drive
Suite 215B
Irvine, CA 92612
USA
Tel: +1 949 253 4163
Fax: +1 949 253 4167
Email: sales@panaz.com



BV 0062



BS5852
CRIB 5
EN1021/2